

University owned accommodation

The university owns several types of rooms, flats and apartments that are available to international staff. Most properties are intended for long lets. Short stay accommodation provides a base from which staff can find a more permanent home.

Long stay accommodation (minimum one month to max. up to 5 year)

Anatomy building

The historic Anatomy building was completed in 1885 and was used as a laboratory and lecture hall for the LUMC until 2007. The building was completely renovated in 2015 and subsequently modernized for housing for PhDs and post docs.

The Anatomy complex consists of the old Anatomy building and a 12-storey apartment tower. The complex offers 168 unfurnished apartments in total. It is owned by the Foundation Stichting Universitaire Woonwijk Boerhaave.

The complex is located at the Bioscience Park Leiden between the LUMC, Faculty of Social Sciences and the ICLON building.

PhD Campus contract for maximum duration of the PhD.



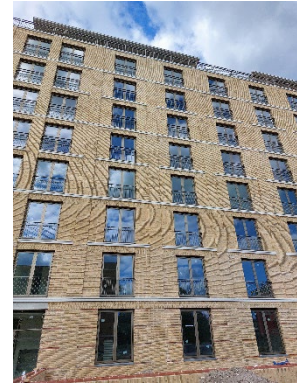
Apartments	Type	Amount
Van Rijsselpad	Single studio apartment (with/without loft)	26
Van Rijsselpad	2 room apartment	50
Verhaartpad	Single studio apartment	8
Verhaartpad	2 room apartment	2
Dankmeijerpad	Single studio apartment	79
Dankmeijerpad	2 room apartment	1
Dankmeijerpad	3 room apartment	2

Boerhaave-complex

The Boerhaave complex is a home to many of our PhDs and consists of two 4-storey buildings and one 8-storey building. The unfurnished apartments are made up of 2, 3 and 4 rooms. The larger apartments are suitable for families with children. The Van Swietenstraat was completed in 2019, the Boerhaavelaan low rise in 2020, The Boerhaavelaan high rise is 2022 and the Marienpoelstraat in 2024. It is owned by the Foundation Stichting Universitaire Woonwijk Boerhaave.



The apartment buildings are conveniently located just outside Leiden’s historic city centre. Close to Leiden Central Station and Bioscience Park Leiden.



Apartments	Type	Amount
Boerhaavelaan	2 room apartment	48
Boerhaavelaan	3 room apartment	24
Boerhaavelaan highrise	2 room apartment	49
Boerhaavelaan highrise	3 room apartment	17
Boerhaavelaan highrise	4 room apartment	1
Van Swietenstraat	2 room apartment	48
Van Swietenstraat	3 room apartment	18
Van Swietenstraat	4 room apartment	4
Marijkepoelstraat	2 room apartment	45
Marijkepoelstraat	3 room apartment	6

PhD Campus contract for maximum duration of the PhD.

Haarlemmerstraat 73

This characteristic building is located in the heart of the historic Centre and was built in 1899. It is owned by the Foundation ‘Stichting Universitaire Woonwijk Boerhaave’ and has 14 apartment for our international staff. This location is not suited for children.

The building is located in the heart of Leiden historic centre.



Room	Type	Amount
C, D, E, F, G, H, J, K, L, M, N, P, R, S	Single studio apartment	14

PhD Campus contract for maximum duration of the PhD.

Groenesteeg 26

Unique location near “Begraafplaats Groenesteeg”. It has an outside terrace and is meant for one person or a couple. The apartment is not suitable for children.

PhD Campus contract for maximum duration of the PhD.



Short stay accommodation (minimum one month to max. 6 months)

University Lodge (5e Binnenvestgracht 7)

The University Lodge is a small house with two living units in the heart of the historical centre of Leiden. Long before it became the University Lodge the house was the home of Prince Constantijn of the Netherlands. The lodge is furnished. This accommodation is not suitable for children.



The apartments are located in Leiden historic centre, close to the faculties of Law and Humanities and the famous Hortus Botanic.

The apartments are fully renovated in 2022.
Maximum rental period: 6 months.

Hogewoerd 144

This monumental building at Hogewoerd 144 is a former auction house situated in a quiet street in the town centre. It has been totally renovated and adapted to the requirements of this age without losing its original character. The building is owned by DUWO Leiden. Two furnished apartments are reserved for international employees. This location is not suited for children.



The apartments are located in Leiden historic centre, close to the faculties of Law and Humanities and the famous Hortus Botanic.

Room	Type	Amount
144F, 144N	Double studio apartment	2

Maximum rental period: 6 months.

Hooigracht & Middelstegracht

This building is classified as a historical monument with its history going back to 1892. It has been used for various purposes and has had a variety of occupants but in Leiden it is known foremost as the former Elisabeth Hospital (1892-1972). In 2001 it was acquired by housing company 'DUWO Leiden' and has since been used mostly for housing international students. 9 furnished apartments are reserved for international employees. This location is not suited for children.



In 2007 the building was completely renovated and modernized but its character remains intact. The stained glass, the original ornaments, the enclosed garden and colors used for the interior remind one of times past.

The apartments are located in Leiden historic centre, close to the faculties of Law and Humanities and the famous Hortus Botanic.

Room	Type	Amount
Hooigracht 17C, 19C Middelstegracht 4N, 4Z, 8	Single studio apartment	5

Maximum rental period: 6 months.

Hugo de Grootstraat 32

This building was built in 1895 and used until 1907 as a pharmaceutical laboratory and until September 2004 used by the Faculty of Law of Leiden University. In 2005 the building was completely renovated and made suitable for housing international students. 11 furnished apartments are reserved for international employees. Horizon House is a national monument and has unusual, neo-gothic arched windows. It is owned by housing corporation 'DUWO Leiden'. This location is not suited for children.



The apartments are located in Leiden historic centre, close to the faculties of Law and Humanities and the famous Hortus Botanic.

Room	Type	Amount
21, 39, 40, 41, 42, 73, 74, 75, 76, 92	Single studio apartment	10
15	Double studio apartment	1

Maximum rental period 6 months.

Sterrenwachtlaan

The history of this monumental building goes back to 1861. It was completely renovated in 2017 and now contains two lovely fully furnished and equipped family homes. This location is especially suited for children.

The homes are located in Leiden historic centre, next to Leiden Observatory, close to the faculties of Law and Humanities and the famous Hortus Botanic.



No.	Type	Amount
2, 3	4 rooms	2

Maximum rental period: 6 months.

Wassenaarseweg 60

This renovated 4 room porters lodge was renovated in 2018 to a lovely home especially suitable for families. It has a small garden located at the back.

The house is convenient located just outside Leiden historic city centre. Close to Leiden Central Station and the Bioscience Park Leiden.

Maximum rental period: 6 months.



Lise Meitnerhof Leiden (More5 building)

The More5 building in Leiden's BioScience Park is set to open in late November 2025.

Here, Leiden University will be able to rent out 120 studios and one-bedroom apartments to PhD students from Leiden University and the LUMC, as well as 30 fully furnished studios and one-bedroom apartments for all employees of Leiden University.

The 130 housing units are intended for PhD students coming to the Netherlands for four years; the 30 furnished apartments are rented out for a minimum of one month and a maximum of six months.

